

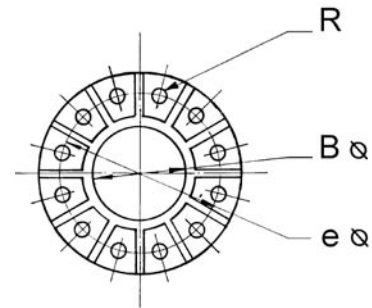
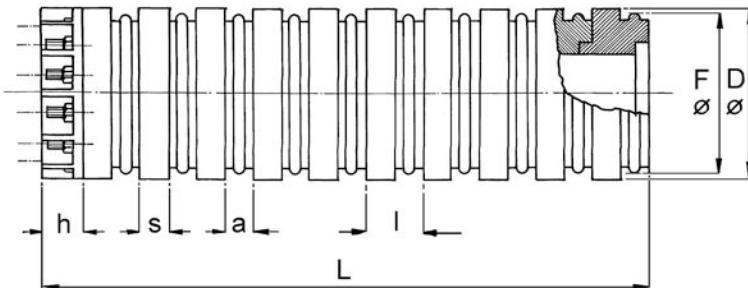
# E.C.P

Engineering Carbon Products Limited



This range of slip rings has been designed to allow for greater adaptability and application of duty. They are suitable for slow and medium speed and are ideal for both power transmission up to 30 amps, and signal transmissions of all types. Best results are obtained when surfaces are plated with silver, gold or rhodium and used in conjunction with silver-graphite brushes, thus giving low contact resistance and low noise conditions.

The maximum number of ways available for modular units is dependent upon the mix of power circuits and signals required. Phosphor-bronze rings are used as standard and The insulation medium is thermoset glass-reinforced DMC based on unsaturated polyester resin (Grades 43-2036/597 and 43-2036/623). All units are tested for continuity and are flash tested track to track and track to earth at 2,500 volts.



Reference	No. of Rings	D.	S.	Standard Bore B.	Bore can be extended up to	Module Length L.	a.	e.	R.	h.	Maximum Current Rating per Ring
35 - 5 - 15	1 to 6	35	5	15	18	8	3	26	M3	10	15A
80 - 7.5 - 45	1 to 22	80	7.4	45	50	14	6.8	64	M5	17	30A
100 - 7.5 - 50	*	100	7.5	50	60	15.1	7.6	70	M4, M5 M6	18	60A
102 - 7 - 50	*	102	7	50	60	15	7.5	75	M4, M5, M6, M8	20	60A
150	*	150	*	90	110	12.5 - 22.5	4.3	128	Up to M8	20	300A
200	*	200	*	135	170	15 - 24	7.5	*	Up to M10	30	400A

\* To suit application

NB. 'h' dimension can be altered to suit application. Insulation barrier diameters can be extended - details upon request.